

# Safety

Mortenson craft workers enjoyed breakfast together on August 17th to acknowledge their role in making the job site safe. There have been no lost time injuries on the project with over 100,000 labor hours worked. As the building expands upward and more trades come on site, statistically the risk of injury rises. Mortenson's Zero Injury Safety program ensures that every person who comes to the project must first attend an initial safety orientation with ongoing trainings and awareness events for the duration of the project. As part of the program, each day all craft workers participate in morning and afternoon stretch and bend along with daily safety messages and reminders. Beginning in September, HCMC physical therapy staff will lead the afternoon stretch the first Wednesday of each month.



## Summer Intern Experience—

As the summer winds down, we say goodbye to our 2 summer engineering interns, Trevor Solie and Eric Brothers.



Trevor will be heading to WI to participate in another internship with Mortenson and then returning to UW-Madison for his final semester in Civil Engineering & Construction Management in January. "I've really enjoyed getting to know the team and having the opportunity to learn about the coordination and complexity of this project", stated Trevor.



Eric will be returning to Washington State to complete his degree in Safety & Health Management at Central Washington University. Eric stated, "I've had the unique opportunity to participate in two distinctly different projects, each with different types of safety concerns that have broadened my knowledge of the industry."

Stay up to date on the progress of the new HCMC Clinic and Specialty Center via the webcam.



<http://www.earthcam.net/projects/mortenson/hcmc/>

## Contact Us

### Newsletter Coordination

Pamela Radcliffe 612-260-2094

[pamela.radcliffe@mortenson.com](mailto:pamela.radcliffe@mortenson.com)



# HCMC CLINIC AND SPECIALITY CENTER

Hennepin County Medical Center—Clinic and Specialty Center September 2016

## Project Overview

Then and now! What a difference in 10 months. With 6 floors up and one more to go, the new HCMC Clinic and Specialty Center is taking shape. Final pours on Levels 6 and 7 will be done over the next 3 weeks. The exterior elevation of the new building will be 191 feet 4 inches. Interior priority wall framing has also started on the ground floor and mechanical and electrical piping is being installed to prepare for heating, ventilation, plumbing and electrical components. The exterior architectural precast panels are being placed around the perimeter of the building. The aluminum curtainwall and metal panels will begin to be placed over the next few weeks changing the look of the exterior façade.



Progress on the tunnel under 8th street, is nearing structural completion by late September.

Final concrete pours will be done by mid-September. Painting, lighting, and other interior work will follow.

Preparations are underway to begin the skyway starting in September that will connect the two buildings at level two. This will include relocating occupants of the 2nd floor in the existing building, building temporary enclosures, opening the existing roof and setting steel.



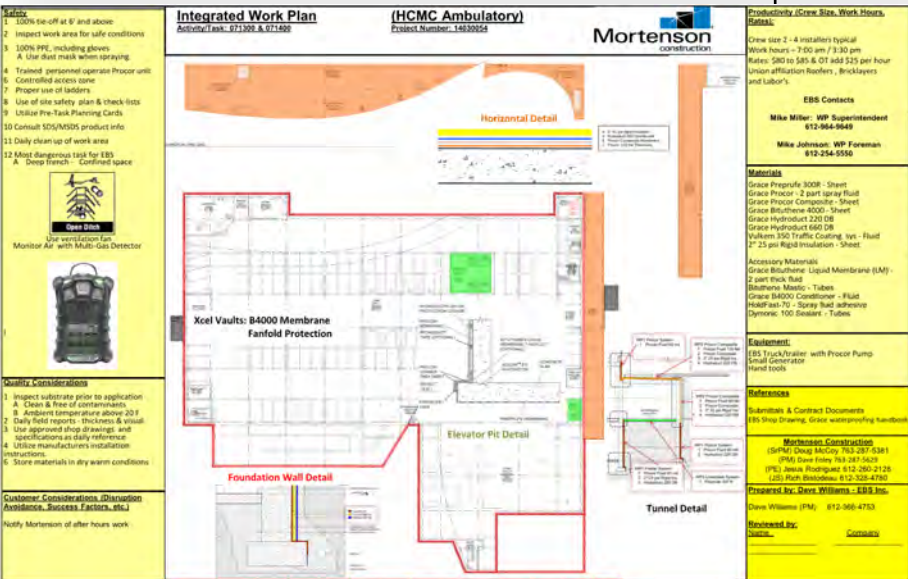
### In This Issue

- Schedule Updates
- Quality & MEP Updates
- Technology
- Tower Crane Adventure
- Summer Intern Experience
- Safety



## Quality Update

Integrated Work Plans (IWPs) provide a concise summary of how safety, quality and productivity (schedule) are managed on the project. Completed IWPs are used by Mortenson and our subcontractors as reference tools for field crews but they really add value to the project when they are made because foremen and tradespeople are engaged in the process. Focusing on safety, quality and productivity provides a framework for a conversation between the office and the field, and allows the team to make sure that they have the resources on hand to do the task safely and meet the schedule, and that everyone understands what is needed to ensure the quality requirements are met.



## MEP Update

Mechanical and electrical activities are well underway. August saw the installation of the underground fuel tank for the new generators and the snow melt system for the parking ramp.

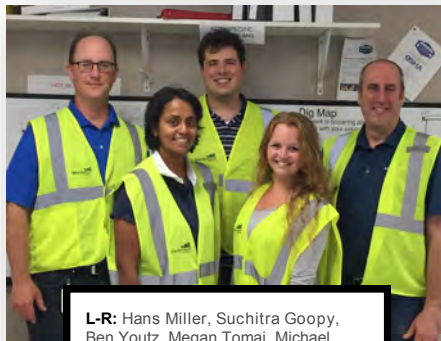


Pipe and ductwork are moving up from the lower levels to level one. Electrical rough-in has also started on level one. In September, Harris will start bringing in prefabricated piping and duct risers. Parsons will set the permanent switchgear. 3-D coordination is wrapping up on level 6 and is currently in progress for the upper level mechanical penthouse.

## Technology in Construction

Members of Mortenson's IT team spent the day with the HCMC project team onsite to learn first hand how technology is used in the field during construction. Having the opportunity to work directly with engineers, project managers, foreman and other team members both in the project office and out on the job site gave the IT team a better understanding of how team members use the technology of both hardware and software on the project.

Most engineers and foreman on site use iPads which allows them quick access to drawings directly at the



L-R: Hans Miller, Suchitra Goopy, Ben Youtz, Megan Tomai, Michael Seelen

location where the work is being done, saving time and reducing costs. IT staff were able to answer questions and provide the team with valuable information to help them better understand the capabilities and potential of the technology.

## Step-Up Interns

Mortenson hired eight Step-Up Achieve City of Minneapolis high school interns this summer. Step-Up Achieve is building tomorrow's workforce today by connecting businesses with the next generation of talented and diverse workers. Twin Cities companies, nonprofits, and public agencies provide internships for students to obtain on the job experience, professional mentors, and learn about advanced career opportunities.



Teng Lee interned with the HCMC project team and assisted project engineer Dave O'Keefe on a day-to-day basis. The HCMC team also hosted a site visit for all of the Step-Up interns to learn about the project and experience what it is like to be on a construction site.

<http://www.achievempls.org/stepupachieve>



Dr. Pryor reaches the apex!

### West Tower Crane

Liebherr 550 HC

Apex Height: 245'

Hook Height: 180'

Max Cap. 44,090lbs

Capacity at the tip. 15,000lbs

Radius: 208'

## Reaching the Top!

Dr. Jon Pryor and Nick Balagurchik scaled the west tower crane on Wednesday, August 17th with Jeremy Hannack, Project Safety Manager. Starting below ground on the lower level of the new HCMC Clinic and Specialty Center, the trio ascending the 185 rungs up the ladder to the cab where they were met by Tower Crane Operator, Tim Olson. Both men were somewhat surprised at the amount of effort it takes to pull yourself up that far. "I thought the climb would be hard on my legs, but more of a workout for my arms," stated Dr. Pryor. He didn't stop at the cab, but continued the climb to the apex and reached the flag.



L-R: Jeremy Hannack, Nick Balagurchik, Dr. Jon Pryor

Tim spent some time with Dr. Pryor and Nick in the cab and out on the jib describing how the crane operates and what his day is like moving equipment and materials around the site. Dr. Pryor and Nick also had the opportunity to take the controls and operate the crane. Nick compared it to a joy stick used for gaming, but highly sensitive with the utmost precision and accuracy.

When asked what interested him in climbing the crane, Nick Balagurchik replied, "I wanted to understand the work that is being done with all the disciplines. It's important to be in others shoes to understand the scope, skill and experience that goes into the tower crane work."

Dr. Pryor and Nick have taken an active interest in learning about the many different roles and processes in constructing the new clinic building. Dr. Pryor operated some of the heavy earth moving machinery used by Bolander & Son's early in the demolition phase.

"I am proud and appreciative of the work Mortenson is doing on our new ambulatory building".

Jon Pryor, MD, MBA, CEO.



Dr. Pryor and Nick Balagurchik 200 feet above the new HCMC Clinic and Specialty Center.



Tower Crane Operator, Tim Olson and Dr. Jon Pryor taking in the view from the deck of the tower crane.



Nick and Dr. Pryor operating the crane.